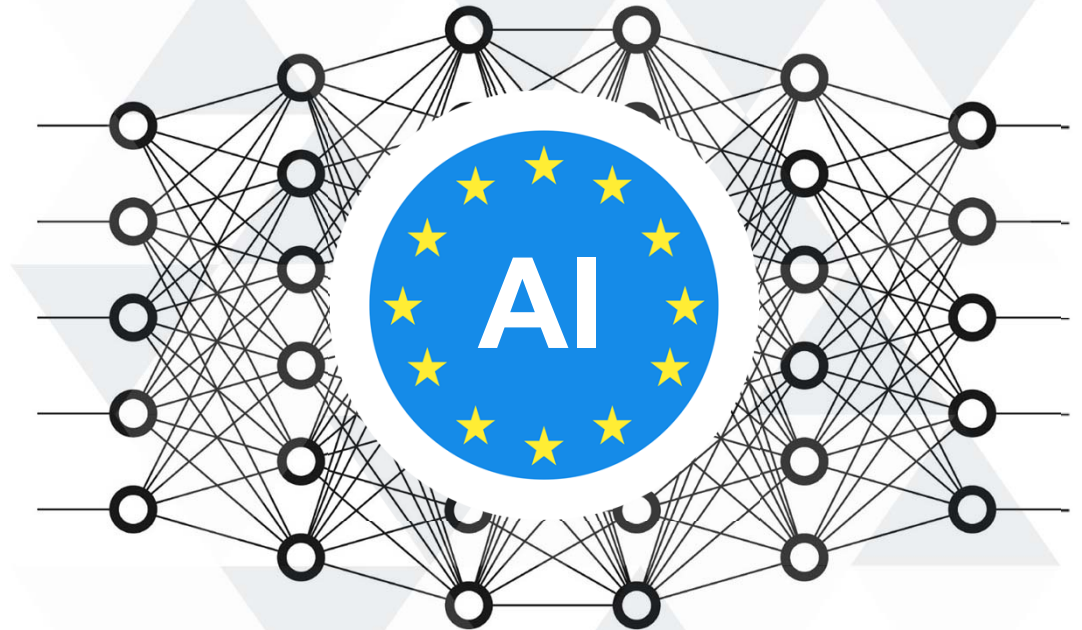


AI - ETHICS

THE NEXT GENERATION

PRESENTED BY

DANIEL SCHWARZ



OVERVIEW

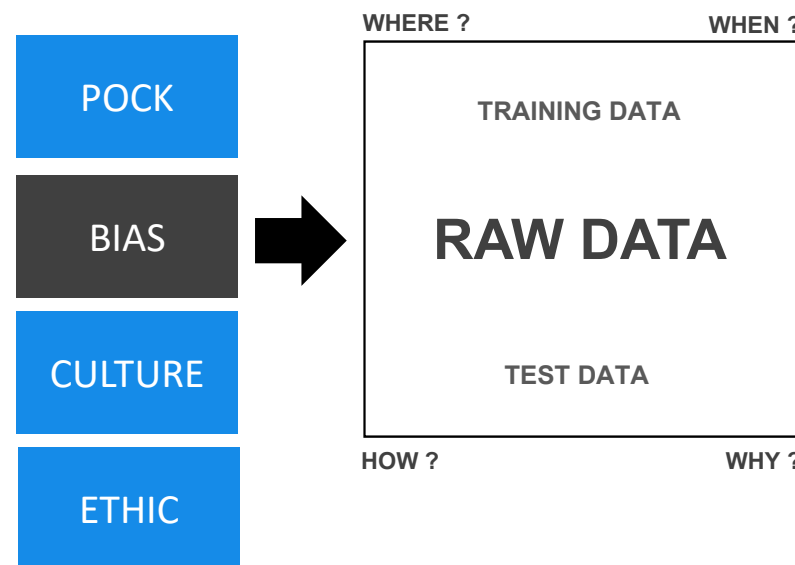
- INTRODUCTION
- FRAMEWORK - TRUSTWORTHY AI
- ASSESSMENT – TRUSTWORTHY AI
- CONCERNS AND CONCLUSION



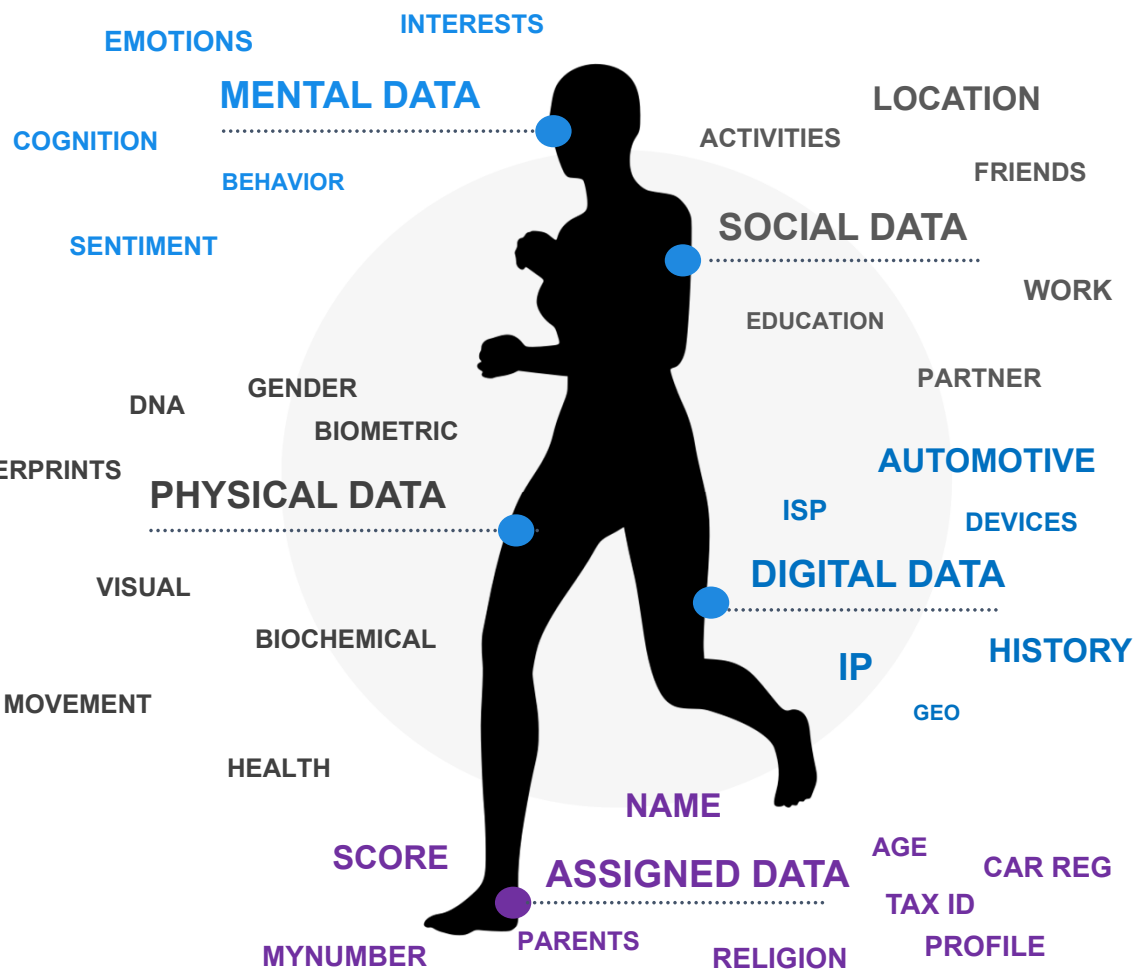


KNOW YOUR DATA

RISK



POCK - POINT OF CURRENT KNOWLEDGE



AI & ETHICS

DATA - ETHICS

A PERFECT DATA MODEL -



What society thinks I do



What my parents think I do



What friends think I do



What my co-workers think I do



What I think I do



What I really do

DOCTORS



ink I do



What my Mom thinks I do



What society thinks I do



What the government thinks I do



What I think I do



What I really do

IN AN IMPERFECT WORLD ?



2013

NHL DRAFTS THE WRONG PLAYERS DUE TO BIRTHDAY BIAS

<https://www.sciencedaily.com/releases/2013/02/130227183506.htm>

Research led by Robert Deaner, associate professor of psychology at Grand Valley.

On average, National Hockey League (NHL) draftees born between July and December are much more likely than those born in the first three months of the year to have successful careers...[]

2018

AMAZON DITCHED AI RECRUITING TOOL THAT FAVORED MEN FOR TECHNICAL JOBS

<https://www.reuters.com/article/us-amazon-com-jobs-automation-insight/amazon-scraps-secret-ai-recruiting-tool-that-showed-bias-against-women-idUSKCN1MK08G>

Amazon's computer models were trained to vet applicants by observing patterns in resumes submitted to the company over a 10-year period. Most came from men, a reflection of male dominance across the tech industry....[]



COMPUTER PROGRAMMER



What my friends think I do



What my mom thinks I do



What society thinks I do



What my spouse thinks I do



What I think I do



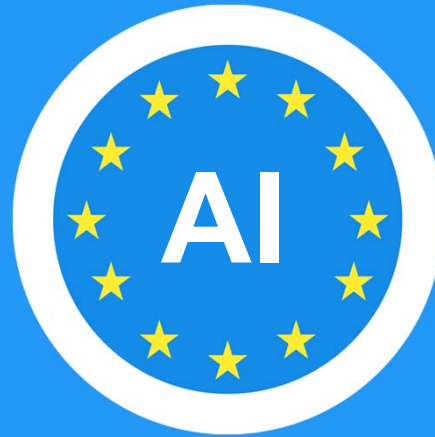
What I actually do



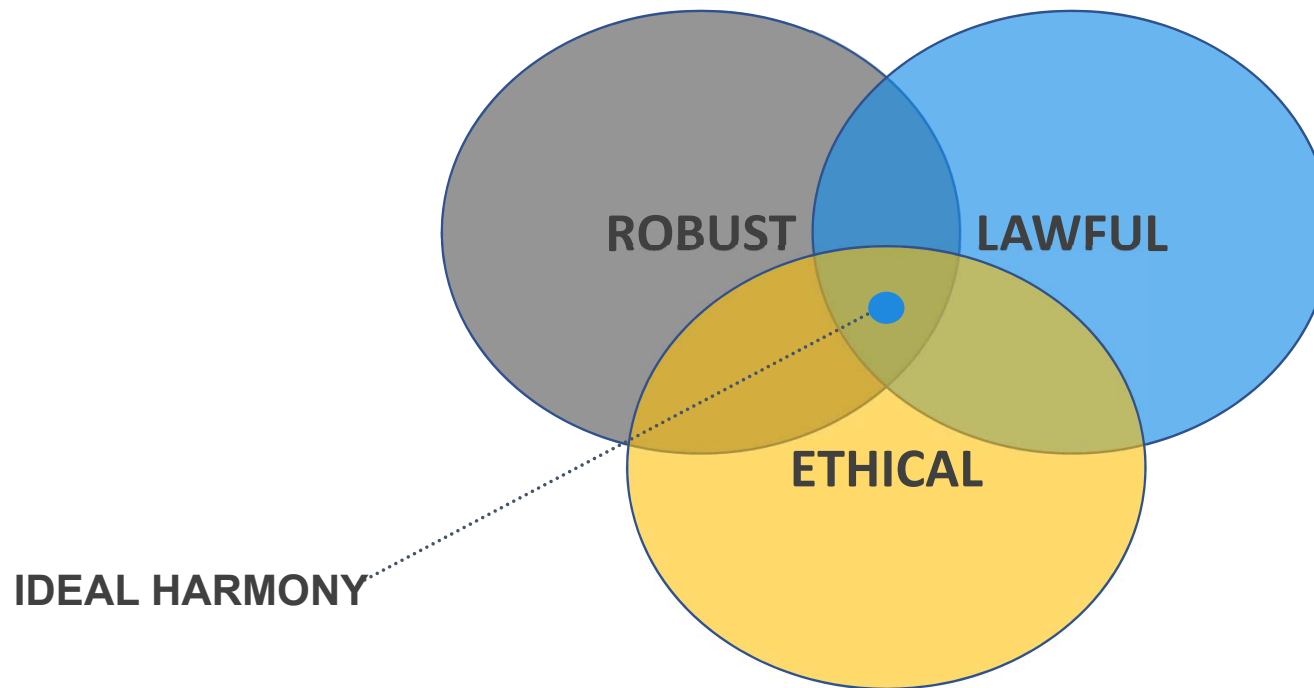
EU - FRAMEWORK

FOR TRUSTWORTHY AI

DATA **AI** ETHICS

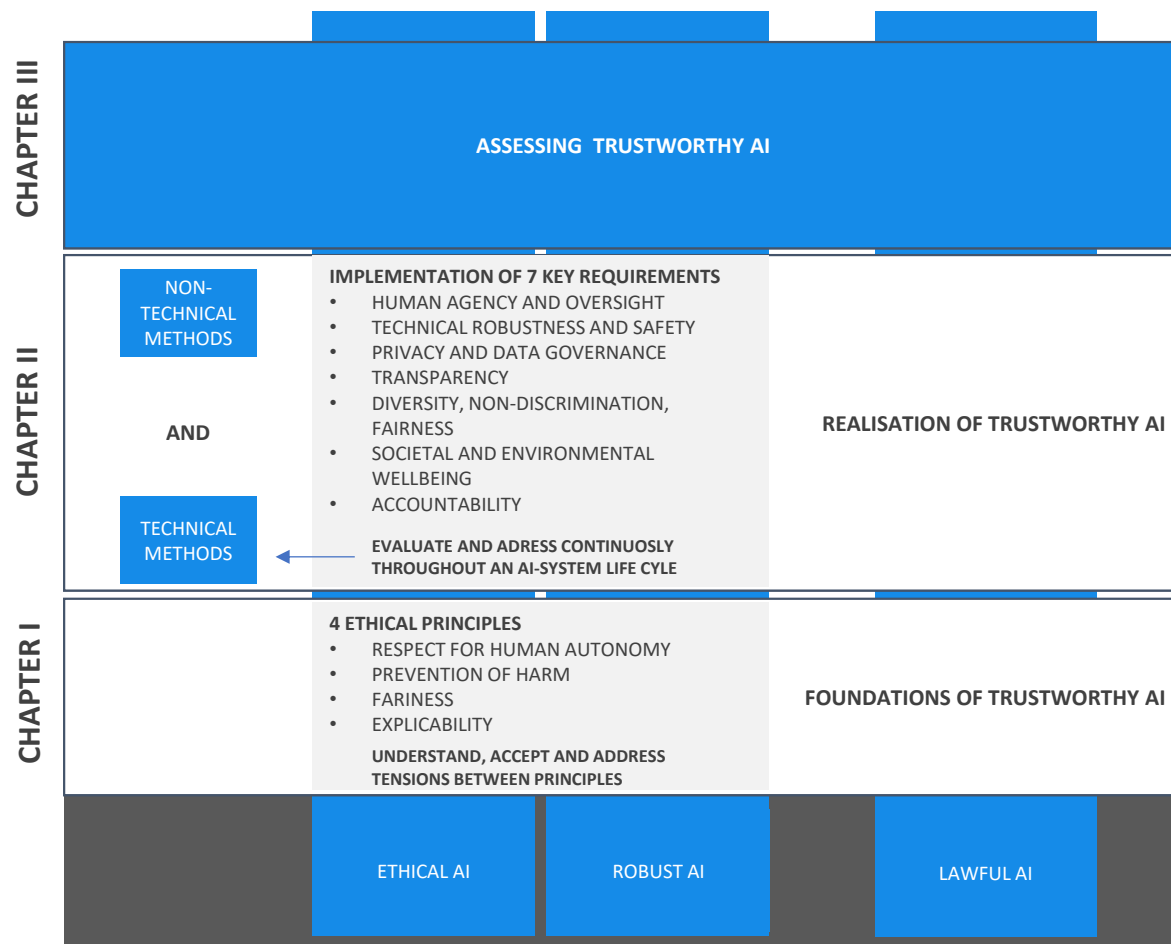


THE COMPONENTS



EACH COMPONENT IS **IMPORTANT** AND **NECESSARY**, HOWEVER ONE ITSELF IS NOT SUFFICIENT TO ACHIEVE **TRUSTWORTHY AI**.





APPLICABLE LAWS

EU PRIMARY LAW

- TREATIES OF THE EUROPEAN UNION
- CHARTER OF FUNDAMENTAL RIGHTS

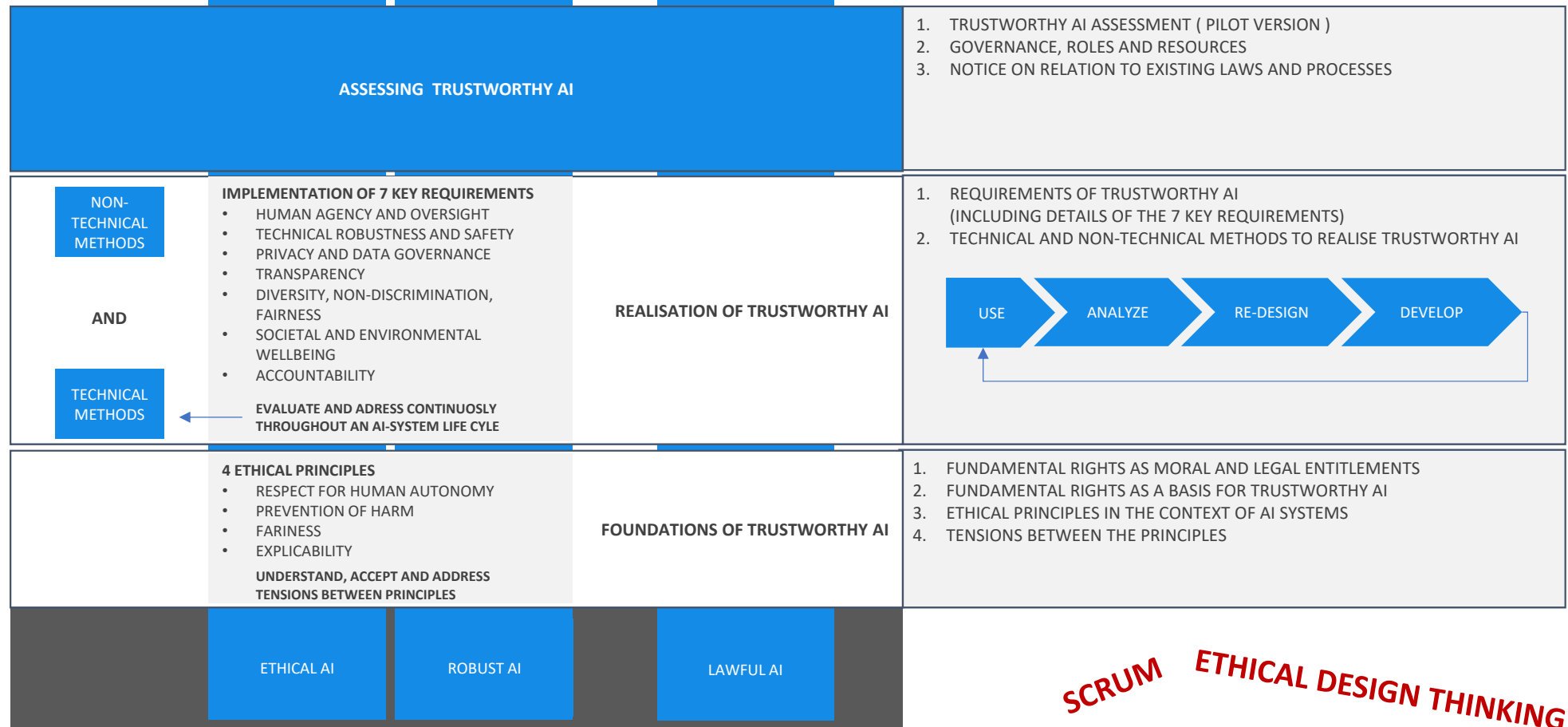
EU SECONDARY LAW

- GENERAL DATA PROTECTION REGULATION
- PRODUCT LIABILITY DIRECTIVE
- REGULATION OF FREE FLOW OF NON-PERSONAL DATA
- ANTI-DISCRIMINATION DIRECTIVES
- UN HUMAN RIGHTS TREATIES
- COUNCIL OF EUROPE CONVENTIONS
- EU MEMBER STATE LAWS

AND MORE...

LAWFUL AI IS **NOT COVERED** IN THE GUIDELINE.





SCRUM ETHICAL DESIGN THINKING

LAWFUL AI IS NOT COVERED IN THE GUIDELINE.



EXECUTIVE MANAGEMENT	<ul style="list-style-type: none"> DISCUSS AND EVALUATE DEVELOPMENT OF AI SYSTEMS SCUSS AND EVALUATE DEPLOYMENT OF AI SYSTEMS SERVES AS ESCALATION BOARD WHEN CRITICAL CONCERNS ARE DETECTED 	ESCALATION
COMPLIANCE / LEGAL	<ul style="list-style-type: none"> MONITORS RESULTS TO MEET TECHNOLOGICAL AND REGULATORY CHANGES. UPDATE STANDARDS AND INTERNAL POLICIES ENSURE LEGAL COMPLIANCE AND VALUES OF THE ORGANISATION 	JUSTIFICATION
DEVELOPMENT	<ul style="list-style-type: none"> EVALUATE AI-BASED PRODUCTS AND SERVICES WHILE LOGGING ALL RESULTS RESULTS WILL TRANSFERED TO EXECUTIVE MANAGEMENT FOR APPROVAL 	EVALUATION
QUALITY ASSURANCE	<ul style="list-style-type: none"> ENSURES AND CHECKS ASSESSMENT LIST ESCALTE TO EXECUTIVE MANAGEMENT IF RESULTS ARE NOT SATISFACTORY 	CONTROL
HR	<ul style="list-style-type: none"> ENSURES RIGHT MIX OF COMPETENCES AND DIVERSITY OF SUBJECT MATTER EXPERTS ENSURES APPROPRIATE TRAINING DELIVERY ON TRUSTWORTHY AI INSIDE THE BUSINESS 	DIVERSITY
PROCUREMENT	<ul style="list-style-type: none"> ENSURES PROCESSES TO PROCURE AI-BASED PRODUCTS OR SERVICES INCLUDING CHECKS FOR TRUSTWORTHY AI 	ENSURE
BAU OPERATIONS	<ul style="list-style-type: none"> INVOLVED RESOURCES INCLUDE ASSESSMENT DURING BAU AND DOCUMENT RESULTS AND OUTCOMES OF THE ASSESSMENT 	MONITORING

BAU – BUSINESS AS USUAL

ADDITIONAL DIVERSITY RECOMMENDATIONS

HUMAN DIVERSITY

- ENSURE APPROPRIATE BALANCE OF WOMEN AND MEN

GENERATION BALANCE

- ENSURE APPROPRIATE BALANCE OF DIFFERENT AGES.

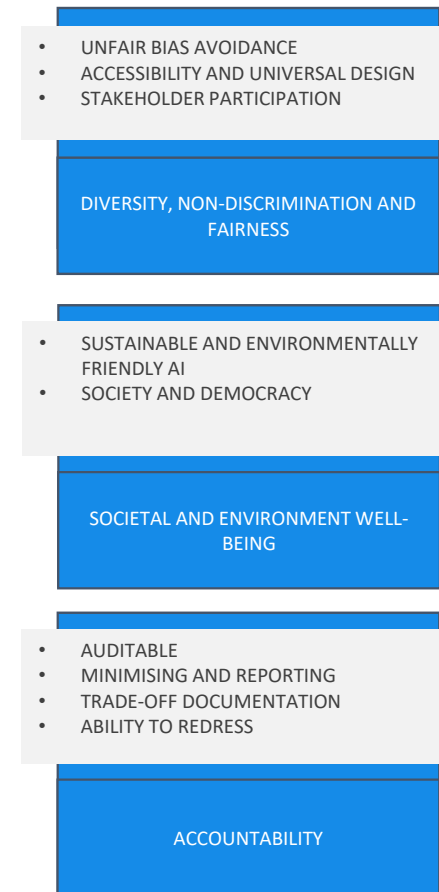
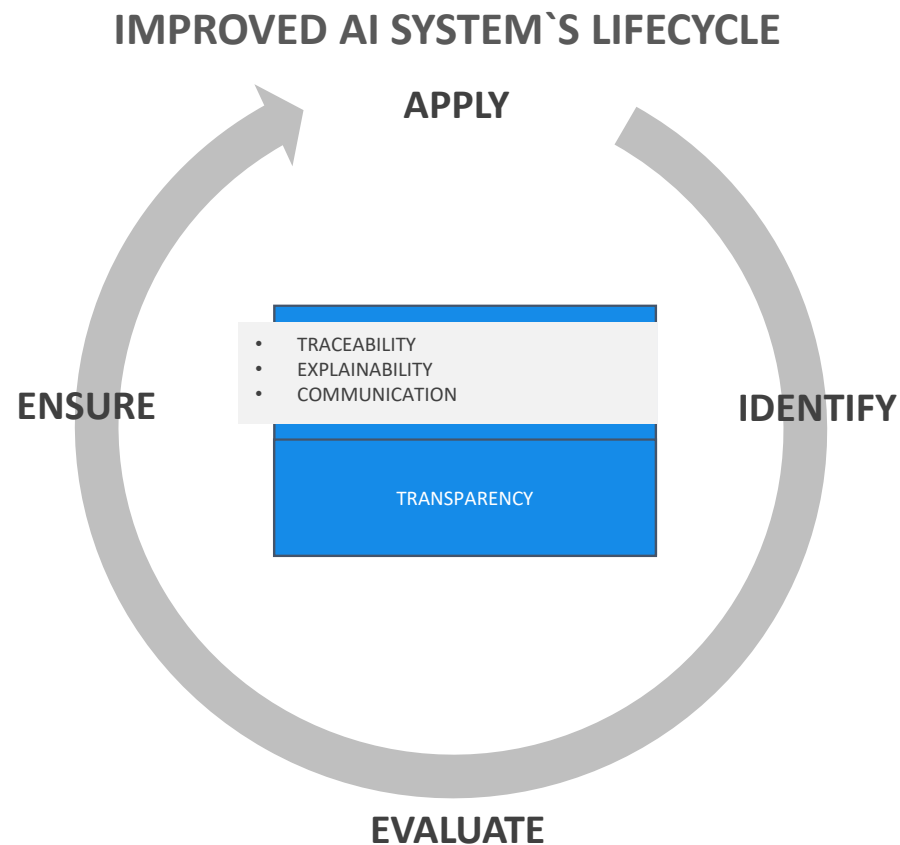
CULTURE BALANCE

- ENSURE APPROPRIATE BALANCE OF MULTIPLE DIFFERENT CULTURES. ESPECIALLY IN INTERNATIONAL COMPANIES OR IF DIFFERENET GLOBAL MARKETS ARE TARGETED.

ADDITIONAL SPECIALISTS

- EXTERNAL CONTRACTOR, IS ABLE TO SEE BEYOND BUSINESS STRUCTURES AND ENABLES NEW INSPIRATION
- DATA ETHICISTS , ADDING PHILOSOPHICAL, PSYCHOLOGICAL EXPERTISE
- IT ARCHITECTS / IT SPECIALISTS / IT SECURITY





CONCERNS

DATA **AI** ETHICS



CONNECTING THE DOTS



LETHAL AUTONOMOUS WEAPON SYSTEMS

2017, A STUDY BY PROF. STUART RUSSEL AT BERKELEY

- FULLY AUTONOMOUS DRONES EQUIPPED WITH EXPLOSIVES, TARGETING SUBJECTS BASED ON PROFILES. IDENTIFICATION THROUGH FACIAL RECOGNITION. (STUDY)

PRIVACY AND TRACKING

2019, GERMANY

- A CHINESE CITIZEN IN GERMANY DEVELOPED AN FACIAL RECOGNITION ALGORYTHM TO IDENTIFY DATA SUBJECTS FROM PORN SITES THROUGH SOCIAL MEDIA

RANSOMWARE 2.0

- BLACKMAILING THROUGH AI MATCHING

FREE AVAILABLE DATA SETS

- FACE PICTURES
- PERSONAL DATA

QUANTUM ARTIFICIAL

- IMPACT YET UNKNOWN



CONCLUSION

DATA **AI** ETHICS



THANK YOU



WE BUILD TRUST IN DATA PROCESSING

WEB: www.it-germany.com

PHONE: +81 (0) 3 6859 - 8260

MAIL: contact@it-germany.com



SOURCES

COGNITIVE BIAS

https://en.wikipedia.org/wiki/List_of_cognitive_biases

ETHICS GUIDELINES FOR TRUSTWORTHY AI – HIGH-LEVEL EXPERT GROUP

<https://ec.europa.eu/digital-single-market/en/news/draft-ethics-guidelines-trustworthy-ai>

COMMUNICATION FROM THE COMMISSION TO THE EUROPEAN PARLIAMENT

<https://ec.europa.eu/digital-single-market/en/news/communication-building-trust-human-centric-artificial-intelligence>

LAWS - SLAUGHTERBOTS

<https://en.wikipedia.org/wiki/Slaughterbots>

FACIAL RECOGNITION, DATA SUBJECT IDENTIFICATION (GERMAN)

<https://www.heise.de/newsticker/meldung/Stalking-per-Bilderkennung-4442417.html>

EDPB – EUROPEAN DATA PROTECTION BOARD

<https://edpb.europa.eu/>

